

# Grain Monitoring Program

## Weekly Performance Update

June 12, 2018

For Grain Week 44 (2017-18 CY)

### Summary

	This Week	Last Week	Var. from Last Year	
<b>1. Stocks in Store (Tonnes 000)</b>				
Country Elevators	↑ 2,485.9	2,261.6	1%	
% of Working Capacity	52%	47%		
Terminal Elevators	↓ 1,046.2	1,093.2	-7%	
% of Working Capacity	60%	63%		
<b>2. Country Deliveries (Tonnes 000)</b>				
Country Deliveries	↑ 1,040.2	622.1	-1%	
<b>3. Railway Car Supply to Western Ports (Cars)</b>				
CN Allocation Plan	↑ 3,509	3,241	3%	
CN Unloads	↓ 3,674	3,763	0%	
CP Allocation Plan	n/a	n/a	n/a	
CP Unloads	↓ 2,025	4,063	-31%	
<b>4. Port Performance</b>				
Total Weekly Unloads	↓ 5,699	7,826	-13%	
4 Week Rolling Average	↓ 7,407	8,207	n/a	
Var. to 4 Week RA	↓ -23%	-5%	n/a	
YTD Unloads	↑ 317,846	312,197	-7%	
Weekly Out of Car Time	↑ 17.2%	11.6%	111%	
<b>5. Shipments (YTD Tonnes 000)</b>				
Vancouver	↑ 18,920	18,495	-2%	
Prince Rupert	↑ 4,458	4,403	-9%	
Thunder Bay	↑ 5,746	5,591	-12%	
<b>Total Western Canada</b>	<b>↑ 29,124</b>	<b>28,489</b>	<b>-5%</b>	
<b>6. Vessels as of Jun 10, 2018</b>				
Vancouver	Vessel Line Up	↑ 17	15	-23%
	Vessels Cleared	— 8	8	14%
	Vessels Incoming	— 10	10	n/a
Pr. Rupert	Vessel Line Up	↑ 3	2	-40%
	Vessels Cleared	— 1	1	-50%
	Vessels Incoming	↓ 1	2	n/a

**Note:** Vessels incoming for the current week represents vessels forecasted to arrive in next grain week. Vessels incoming for the previous week represents the number of vessels that arrived in the current reporting week.

#### 1. Stocks in Store: (Page 2)

- Country stocks increased to 2.5 MMT in Week 44 utilizing 52% of the system's working capacity. Space in primary elevators is good.
- Total western port terminal stocks decreased to 1.0 MMT in Week 44, utilizing 60% of the working capacity.

#### 2. Country Deliveries: (Page 2)

- Producer deliveries were 1,040,200 tonnes in Week 44.

#### 3. Railway Car Supply: (Page 3)

- Railcar allocation plans are supplied by CN to Week 46 of the 2017-18 grain year (see page 3 for details).

#### 4. Port Performance: (Page 4)

- Total western port unloads were 23% lower than the 4-week rolling average and 13% lower than Week 44 last year.
- West Coast unloads were 4,920 cars (Vancouver 4,209 and Prince Rupert 711), 17% lower than the 4-week rolling average and 4% lower than Week 44 last year.
- Thunder Bay unloads were 779 cars, 47% lower than the 4 week-rolling average and 46% lower than Week 44 last year.
- Year to date total western port unloads are 7% lower than same period last year. The corresponding tonnage is 7% lower.
- The total average terminal out of car time (OCT) increased to 17.2% from 11.6% in the previous week. The OCT time for Week 44 was 23% in Vancouver, 13% in Prince Rupert, and 0% in Thunder Bay.

#### 5. Shipments: (Page 5)

- Year to date Western Canadian shipments from port terminal elevators at Week 44 are 5% lower than the same period last year and 1% lower than the 5-year average.

#### 6. Vessels: (Page 5)

- Week 45 lineup at Vancouver increased to a total of 17 vessels (The current one-year average at Vancouver is 21 vessels). Of the 17, 4 were at berth, 10 were anchored at English Bay 1 was in Burrard Inlet and 2 were anchored off the southern coast of Vancouver Island.
- Prince Rupert vessel count increased to 3 vessels (The current one-year average at Prince Rupert is 4 vessels).
- Vessels cleared from Vancouver were 8, and from Prince Rupert were 1 in Week 45 of the 2017-18 crop year.

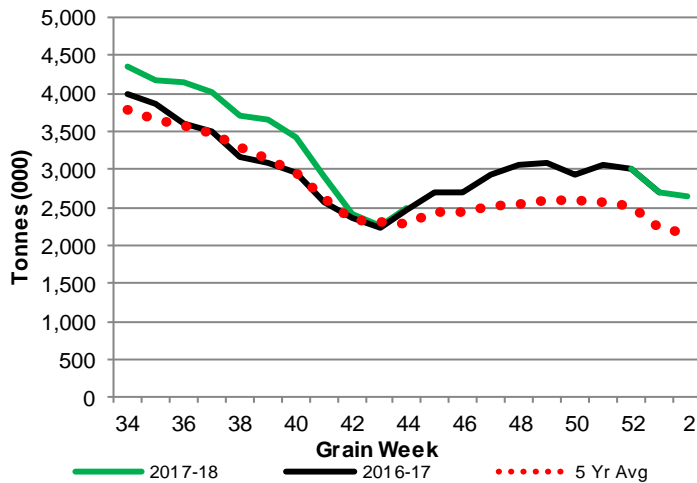
**NOTE:** Week 44 unloads were reduced due to the CP strike preparations and brief work stoppage.

# 1. Stocks in Store

1-A1 Country Stocks ('000 tonnes) – Week 44

	MB	SK	AB	BC	Total
2017-18	591.1	1,148.3	727.5	19.0	2,485.9
2016-17	600.0	1,212.3	633.0	22.7	2,468.0
5 Yr Avg	519.9	1,188.4	735.0	21.8	2,465.0
Var % - LY	-1%	-5%	15%	-16%	1%
Var % - 5 Yr Avg	14%	-3%	-1%	-13%	1%
Storage Capacity	1,584.6	3,865.1	1,913.7	41.1	7,404.5
Estimated Working Capacity	1,030.0	2,512.3	1,243.9	26.7	4,813.0
17-18 % of Wkg Cap	57%	46%	58%	71%	52%

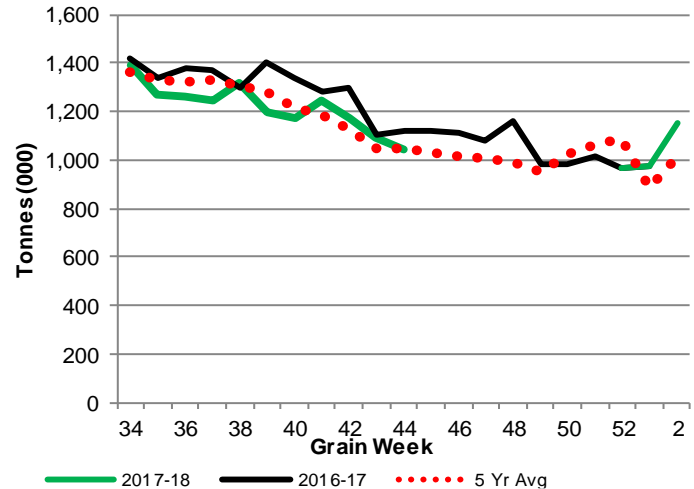
1-A2 Weekly Country Stocks in Store



1-B1 Terminal Stocks ('000 tonnes) – Week 44

	West Coast	Churchill	Thunder Bay	Total
2017-18	641.9	29.5	374.8	1,046.2
2016-17	627.4	29.5	465.3	1,122.2
5 Yr Avg	568.9	26.3	454.3	1,049.5
Var % - LY	2%	0%	-19%	-7%
Var % - 5 Yr Avg	13%	12%	-18%	0%
Storage Capacity	1,187.5	140.0	1,157.5	2,485.0
Estimated Working Capacity	831.2	98.0	810.3	1,739.5
17-18 % of Wkg Cap	77%	30%	46%	60%

1-B2 Weekly Terminal Stocks in Store

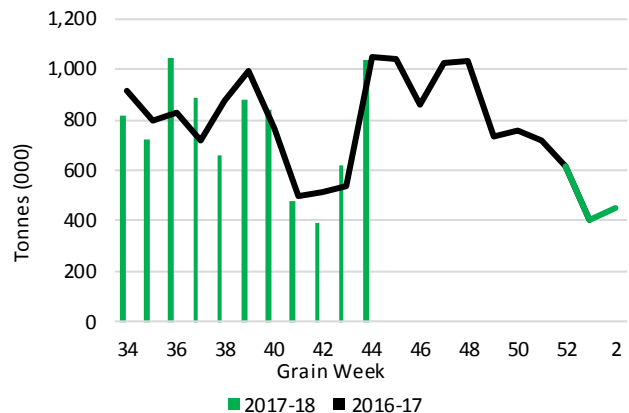


# 2. Country Deliveries

2-A Weekly Country Deliveries ('000 tonnes) - Week 44

	MB	SK	AB	BC	Total
2017-18	182.8	470.1	383.2	4.1	1,040.2
2016-17	175.6	528.8	335.7	5.5	1,045.6
4 Wk Avg	124.9	281.7	222.6	3.3	632.5
Var % to Last Year	4%	-11%	14%	-25%	-1%
Var % To 4 Wk Avg	46%	67%	72%	25%	64%

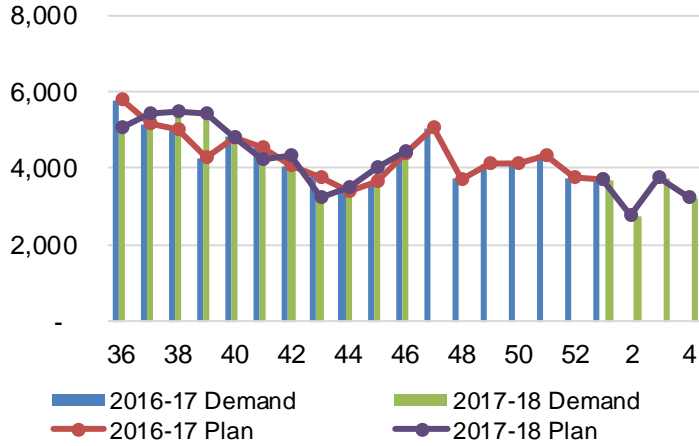
2-B 2017-18 Weekly Country Deliveries vs 2016-17



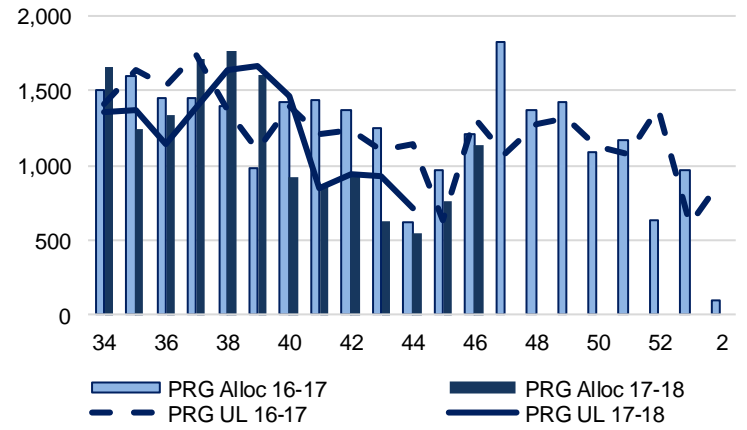
### 3. Railway Car Supply

**Special Note to readers:** CP discontinued publishing weekly railcar spotting plans in Week 12 of the 2014-15 crop year (GCRS Service Report). CN continues to publish a weekly plan and the graphs below reflect CN's plan to Week 46 of 2017-18. Note that the orders accepted do not necessarily reflect shipper demand, but rather the railways' acceptance of shippers' car orders. When both railways provide the order fulfillment data requested with the expansion of the GMP mandate, which was announced on February 3, 2014, a complete set of metrics will be presented.

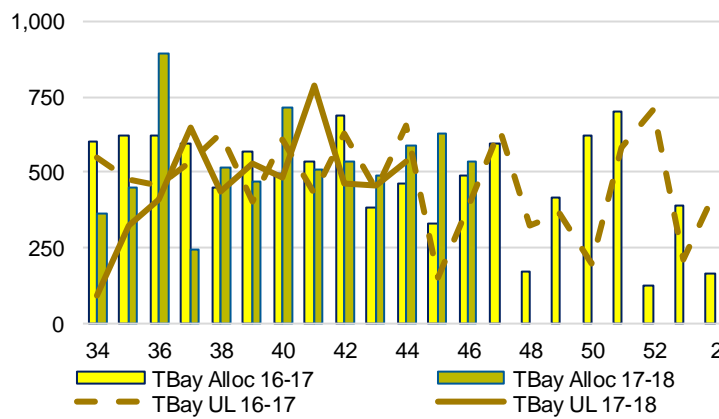
**3-A: Canadian National Planned Car Allocation vs. Demand (# of Cars) To Week 46 2017-18 Crop Year**



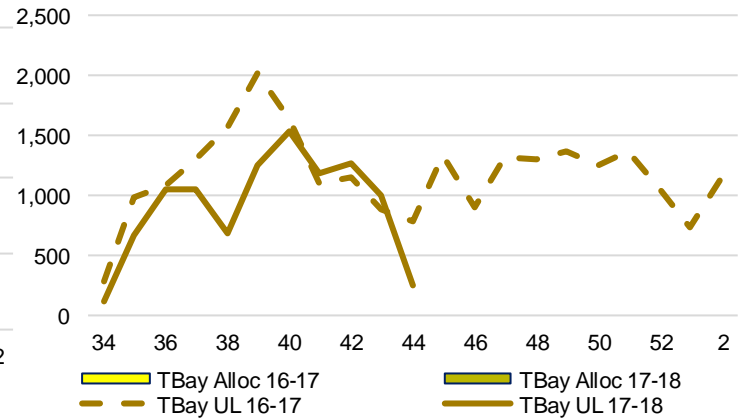
**3-B3: Canadian National Planned Car Allocation to Western Ports Vs. Corridor Unloads at Port (# of Cars) – Prince Rupert**



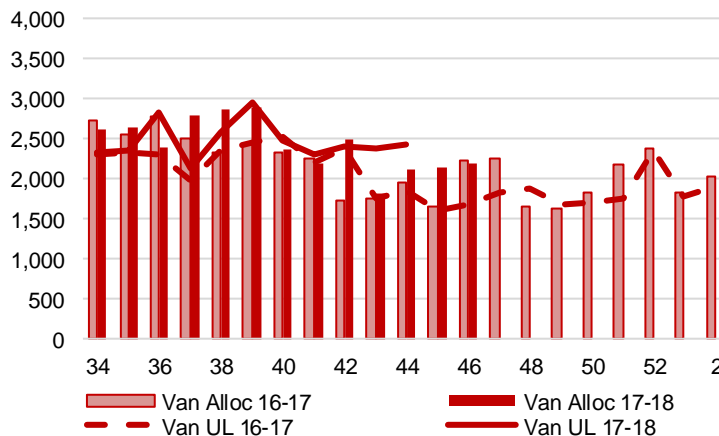
**3-B1: Canadian National Planned Car Allocation to Western Ports Vs. Corridor Unloads at Port (# of Cars) – Thunder Bay**



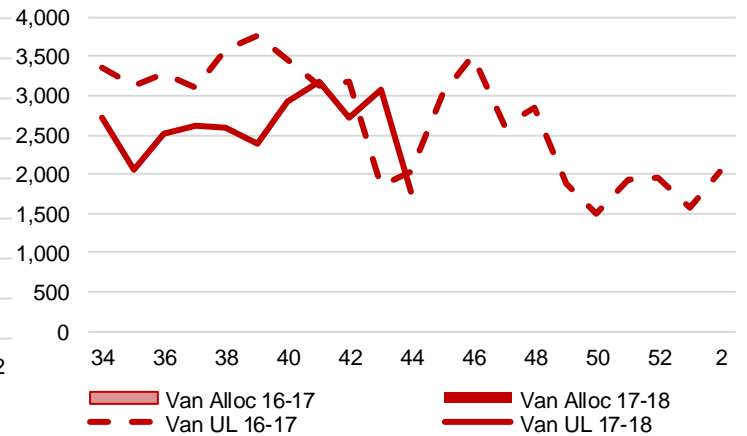
**3-C1: Canadian Pacific Planned Car Allocation to Western Ports vs. Corridor Unloads at Port (# of Cars) – Thunder Bay**



**3-B2: Canadian National Planned Car Allocation to Western Ports Vs. Corridor Unloads at Port (# of Cars) – Vancouver**



**3-C2: Canadian Pacific Planned Car Allocation to Western Ports vs. Corridor Unloads at Port (# of Cars) – Vancouver**



## 4. Port Performance

### 4-A Weekly Unloads by Port (Cars) – This Year for Week 44, 4-Week Rolling Average and Variances

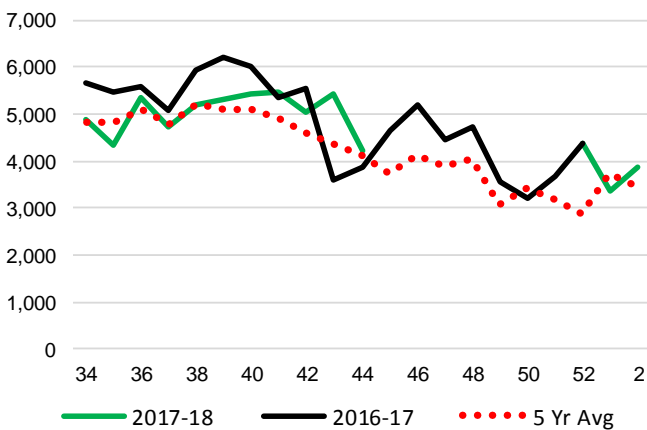
	Vancouver	Prince Rupert	West Coast	Thunder Bay	Churchill	Total
2017-18	4,209	711	4,920	779	-	5,699
2016-17	3,874	1,248	5,122	1,440	-	6,562
4 Wk Avg	5,037	857	5,894	1,481	-	7,375
Var % to Last Year	9%	-43%	-4%	-46%	n/a	-13%
Var % to 4 Wk Avg	-16%	-17%	-17%	-47%	n/a	-23%

### 4-B Railcar Unloads and Tonnes – This Year to Date as of Week 44 and Variances

	Vancouver	Prince Rupert	West Coast	Thunder Bay	Churchill	Total
<b>Total Cars</b>						
2017-18	205,384	48,938	254,322	59,706	-	314,028
2016-17	214,016	57,571	271,587	70,885	-	342,472
5 Yr Avg	195,914	56,607	252,520	65,304	2,729	320,553
Var % to Last Year	-4%	-15%	-6%	-16%	n/a	-8%
Var % to 5 Yr Avg	5%	-14%	1%	-9%	-100%	-2%
<b>Total Tonnes</b>						
2017-18	18,854,657	4,436,384	23,291,040	5,498,966	-	28,790,006
2016-17	19,165,288	5,133,348	24,298,636	6,500,325	-	30,798,961
5 Yr Avg	17,546,041	5,031,809	22,577,850	5,974,890	297,841	28,850,581
Var % to Last Year	-2%	-14%	-4%	-15%	n/a	-7%
Var % to 5 Yr Avg	7%	-12%	3%	-8%	-100%	0%

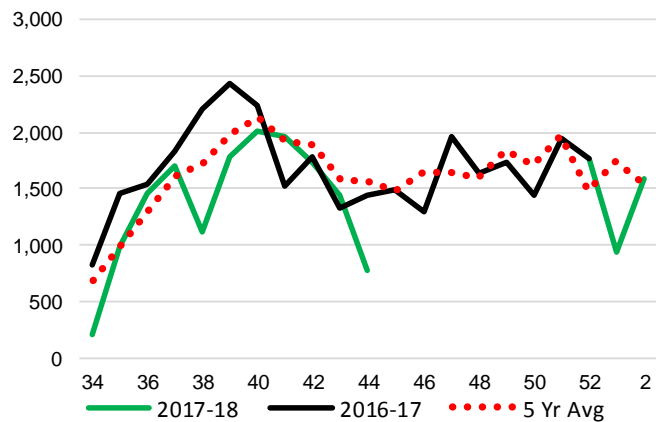
### 4-C Vancouver Unloads (# of Cars)

(This Year vs. Last Year and the 5-Year Average)



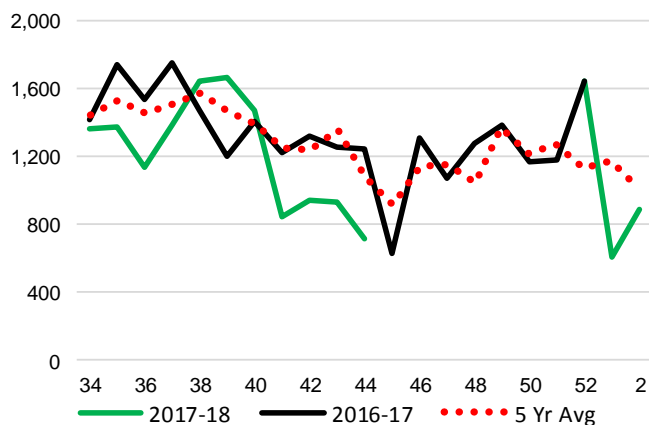
### 4-E Thunder Bay Unloads (# of Cars)

(This Year vs. Last Year and the 5-Year Average)

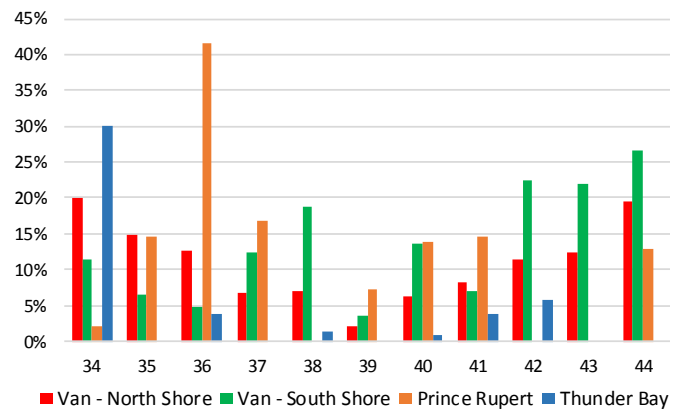


### 4-D Prince Rupert Unloads (# of Cars)

(This Year vs. Last Year and the 5-Year Average)



### 4-F Weekly Out of Car Time (% of hours out of cars / total hours working) – by Port to Week 44



Out of car time is measured weekly and uses data from terminal elevators on the total number of hours the facilities are open & staffed (including overtime hours) and the corresponding number of hours that terminals have no rail cars available to unload. The measure is expressed as a percentage (hours without cars to the total number of hours working).

**4-G Monthly Unloads (Cars) – This year vs. Last Year and the 5-Year Average to Week 44**

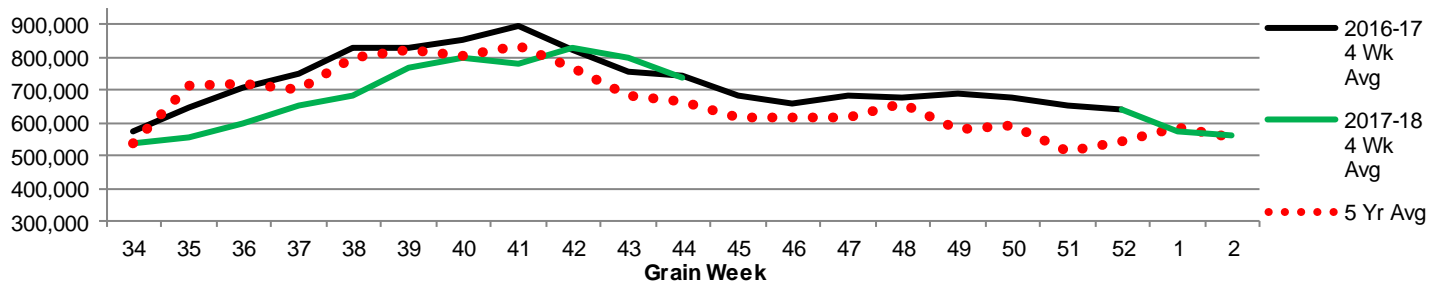
Months	Aug	Sep	Oct	Nov	Dec	Jan	Feb	Mar	Apr	May	Jun	Jul
Weeks	1-5	6-9	10-13	14-18	19-22	23-27	28-31	32-35	36-39	40-44	45-48	49-52
2017-18	30,257	34,787	35,650	40,849	29,069	30,458	19,212	26,536	32,503	38,525	-	-
2016-17	31,197	33,447	36,002	44,476	28,797	28,771	26,824	37,057	36,789	39,112	29,666	27,065
5 Yr Avg	33,626	33,193	34,523	41,645	26,367	30,021	22,892	27,480	32,814	38,537	26,863	25,033
Var % to Last Year	-3%	4%	-1%	-8%	1%	6%	-28%	-28%	-12%	-2%		
Var % to 5 Yr Avg	-10%	5%	3%	-2%	10%	1%	-16%	-3%	-1%	0%		

**5. Shipments**

**5-A Shipments from Port Terminals (Tonnes) – This Year as of Week 44 and Variance to Last Year**

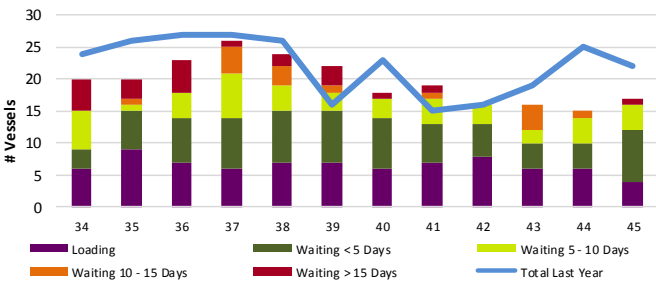
	Vancouver	Prince Rupert	West Coast	Thunder Bay	Churchill	Total
2017-18	18,920,156	4,457,950	23,378,106	5,745,811	-	29,123,917
2016-17	19,229,632	4,885,152	24,114,784	6,545,152	-	30,659,936
5 Year Avg	17,953,017	4,957,368	22,910,386	6,152,450	270,243	29,333,079
Var % to Last Year	-2%	-9%	-3%	-12%	n/a	-5%
Var % to 5 Year Avg	5%	-10%	2%	-7%	-100%	-1%

**5-B Weekly Shipments (Tonnes) from Port Terminals - This year 4-Wk moving avg vs. last year 4-Wk moving avg and the 5-year avg**

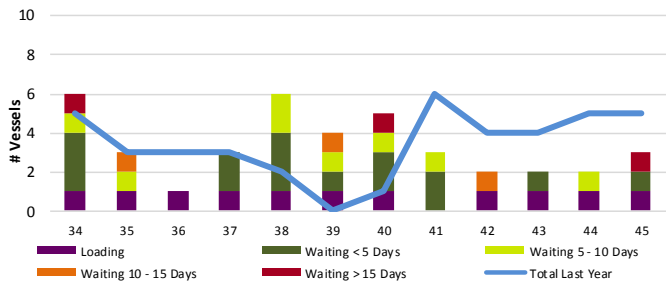


**6. Vessels**

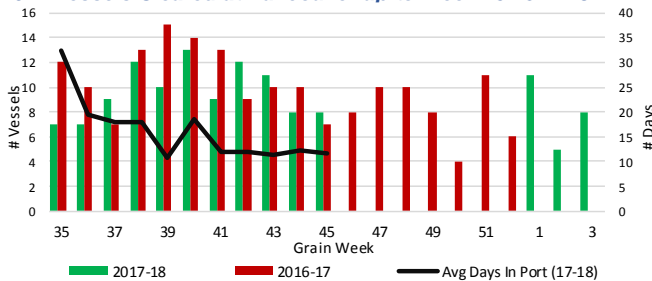
**6-A Vessel lineup at Vancouver as of Week 45 2017-18**



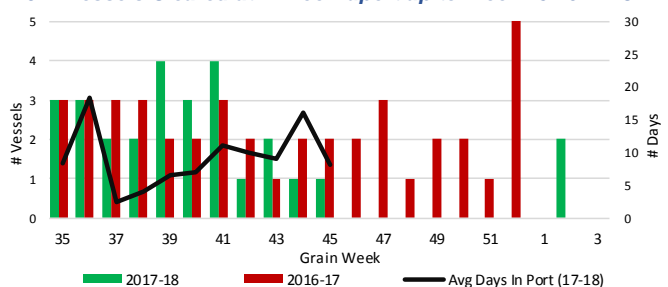
**6-C Vessel lineup at Prince Rupert as of Week 45 2017-18**



**6-B Vessels Cleared at Vancouver up to Week 45 2017-18**



**6-D Vessels Cleared at Prince Rupert up to Week 45 2017-18**



Note: To determine Avg Days in Port, Quorum first establishes which vessels cleared port in each specific grain week. Then, the number of days each cleared vessel spent in port is calculated by subtracting the date of arrival from the date of departure. Lastly, an average of these days is produced for the week, which yields Avg Days in Port. The measure uses vessel data provided by the BC Chamber of Shipping.