

Grain Monitoring Program

Weekly Performance Update

October 31, 2017

For Grain Week 12 (2017-18 CY)

Summary

	This Week	Last Week	Var. from Last Year	
1. Stocks in Store (Tonnes 000)				
Country Elevators	↑ 3,863.2	3,808.8	12%	
% of Working Capacity	82%	80%		
Terminal Elevators	↑ 1,464.7	1,369.6	28%	
% of Working Capacity	84%	79%		
2. Country Deliveries (Tonnes 000)				
Country Deliveries	↑ 991.7	944.2	-11%	
3. Railway Car Supply to Western Ports (Cars)				
CN Allocation Plan	↓ 5,355	5,580	-6%	
CN Unloads	↑ 4,463	3,708	0%	
CP Allocation Plan	n/a	n/a	n/a	
CP Unloads	↓ 4,175	4,193	-8%	
4. Port Performance				
Total Weekly Unloads	↑ 8,638	7,901	-4%	
4 Week Rolling Average	↓ 8,760	8,950	n/a	
Var. to 4 Week RA	↑ -1%	-12%	n/a	
YTD Unloads	↑ 91,096	82,458	0%	
Weekly Out of Car Time	↓ 4.2%	11.0%	-50%	
5. Shipments (YTD Tonnes 000)				
Vancouver	↑ 4,811	4,479	2%	
Prince Rupert	↑ 1,055	986	-7%	
Thunder Bay	↑ 1,909	1,674	-18%	
Total Western Canada	↑ 7,776	7,140	-5%	
6. Vessels as of 10/29/2017				
Vancouver	Vessel Line Up	↓ 22	25	47%
	Vessels Cleared	↑ 11	9	10%
	Vessels Incoming	↑ 9	8	n/a
Pr. Rupert	Vessel Line Up	↑ 5	4	0%
	Vessels Cleared	↑ 2	1	0%
	Vessels Incoming	↑ 4	3	n/a

1. Stocks in Store: (Page 2)

- Country stocks increased to 3.9 MMT in Week 12 utilizing 82% of the system's working capacity. Space in country elevators is fair.
- Total western port terminal stocks increased to 1.5 MMT in Week 12, utilizing 84% of the working capacity.

2. Country Deliveries (Page 2)

- Producer deliveries increased to 991,700 tonnes.

3. Railway Car Supply: (Page 3)

- Railcar allocation plans are supplied by CN to Week 14 of the 2017-18 grain year (see page 3 for details).

4. Port Performance: (Page 4)

- Total western port unloads are 1% lower than the 4-week rolling average and 4% lower than Week 12 last year.
- West Coast unloads were 6,518 cars (Vancouver 5,342 and Prince Rupert 1,176), approximately equal to the 4-week rolling average and 2% lower than Week 12 last year.
- Thunder Bay terminals unloaded 2,120 cars, 6% lower than the 4-week rolling average and 10% lower than Week 12 last year.
- Year to date total western port unloads are approximately equal to the same period last year. The corresponding tonnage is 1% lower than the same period last year.
- The total average terminal out of car time (OCT) decreased to 4.2% from 11.0% in the previous week. The OCT time for Week 12 was 5% in Vancouver, 11% in Prince Rupert and 0% in Thunder Bay. All grain elevators are reporting.

5. Shipments: (Page 5)

- Year to date Western Canadian shipments from port terminal elevators at Week 12 are 5% lower than the same period last year and 4% lower than the 5-year average.

6. Vessels: (Page 5)

- Week 13 lineup at Vancouver decreased to a total of 22 vessels (The current one-year average at Vancouver is 22 vessels). Of the 22, 8 were at berth, 11 were anchored at English Bay, and 3 were anchored along the southern shore of Vancouver Island.
- Prince Rupert vessel count increased to a total of 5 vessels (The current one-year average at Prince Rupert is 4 vessels).
- Vessels cleared from Vancouver were 11, and from Prince Rupert was 2 in Week 13 of the 2017-18 crop year.

Note: Vessels incoming for the current week represents vessels forecasted to arrive in next grain week. Vessels incoming for the previous week represents the number of vessels that arrived in the current reporting week.

1. Stocks in Store

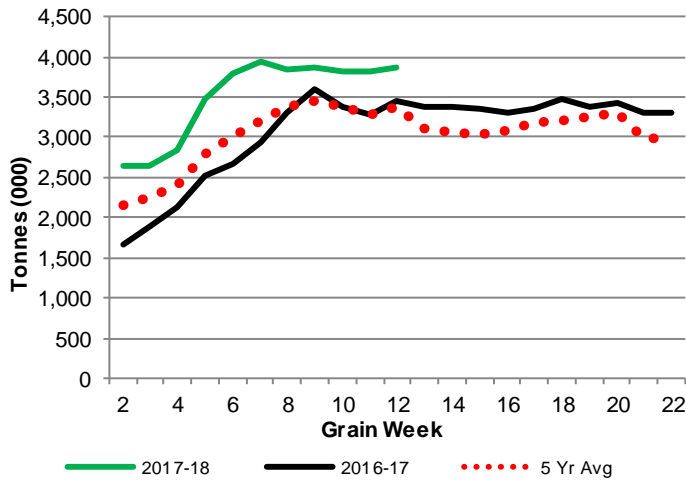
1-A1 Country Stocks ('000 tonnes) – Week 12

	MB	SK	AB	BC	Total
2017-18	919.9	1,919.6	996.8	26.9	3,863.2
2016-17	888.7	1,638.9	898.9	30.8	3,457.3
5 Yr Avg	822.3	1,634.7	891.0	27.7	3,375.6
Var % - LY	4%	17%	11%	-13%	12%
Var % - 5 Yr Avg	12%	17%	12%	-3%	14%
Storage Capacity	1,594.5	3,751.1	1,904.5	41.1	7,291.3
Estimated Working Capacity	1,036.4	2,438.2	1,237.9	26.7	4,739.3
17-18 % of Wkg Cap	89%	79%	81%	101%	82%

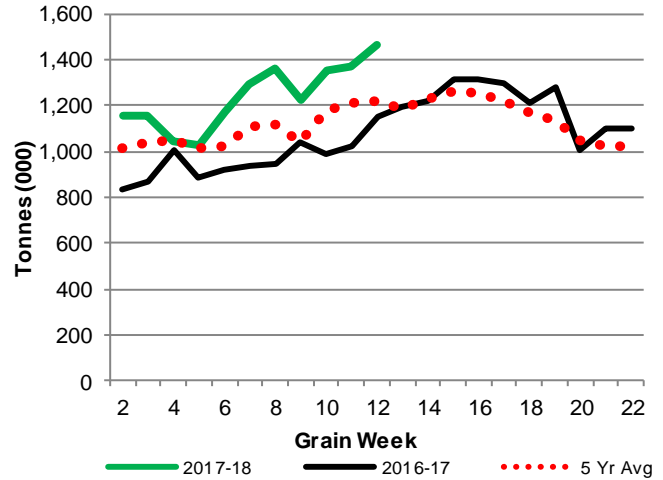
1-B1 Terminal Stocks ('000 tonnes) – Week 12

	West Coast	Churchill	Thunder Bay	Total
2017-18	779.6	29.5	655.6	1,464.7
2016-17	736.5	29.5	381.6	1,147.6
5 Yr Avg	602.6	56.2	557.2	1,216.0
Var % - LY	6%	0%	72%	28%
Var % - 5 Yr Avg	29%	-48%	18%	20%
Storage Capacity	1,187.5	140.0	1,157.5	2,485.0
Estimated Working Capacity	831.2	98.0	810.3	1,739.5
17-18 % of Wkg Cap	94%	30%	81%	84%

1-A2 Weekly Country Stocks in Store



1-B2 Weekly Terminal Stocks in Store

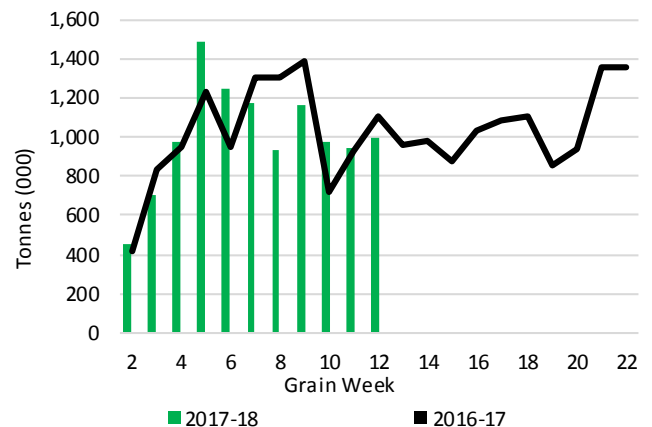


2. Country Deliveries

2-A Weekly Country Deliveries ('000 tonnes) - Week 12

	MB	SK	AB	BC	Total
2017-18	193.8	479.4	311.8	6.7	991.7
2016-17	207.9	532.6	355.8	12.1	1,108.5
4 Wk Avg	261.3	467.9	280.8	8.5	1,018.4
Var % to Last Year	-7%	-10%	-12%	-45%	-11%
Var % To 4 Wk Avg	-26%	2%	11%	-21%	-3%

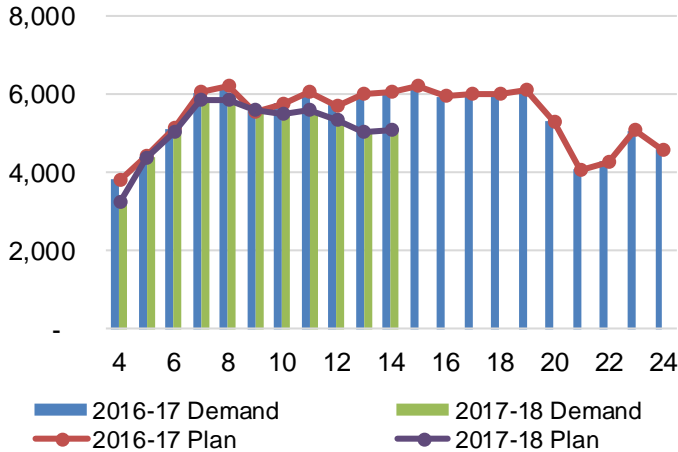
2-B 2017-18 Weekly Country Deliveries vs 2016-17



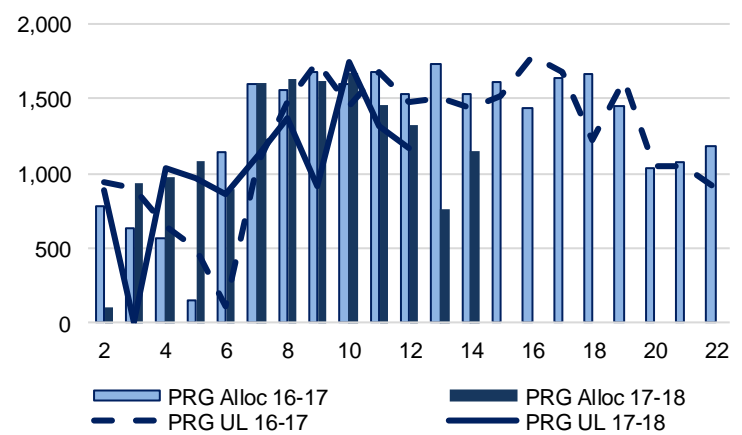
3. Railway Car Supply

Special Note to readers: CP discontinued publishing weekly railcar spotting plans in Week 12 of the 2014-15 crop year (GCRS Service Report). CN continues to publish a weekly plan and the graphs below reflect CN's plan to Week 14 of 2017-18. Note that the orders accepted do not necessarily reflect shipper demand, but rather the railways' acceptance of shippers' car orders. When both railways provide the order fulfillment data requested with the expansion of the GMP mandate, which was announced on February 3, 2014, a complete set of metrics will be presented.

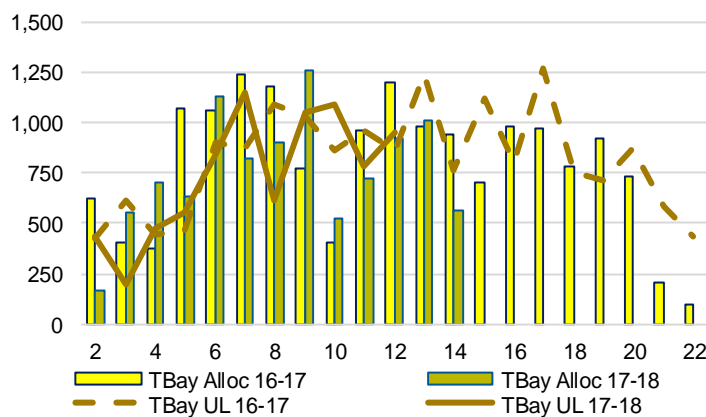
3-A: Canadian National Planned Car Allocation vs. Demand (# of Cars) To Week 14 2017-18 Crop Year



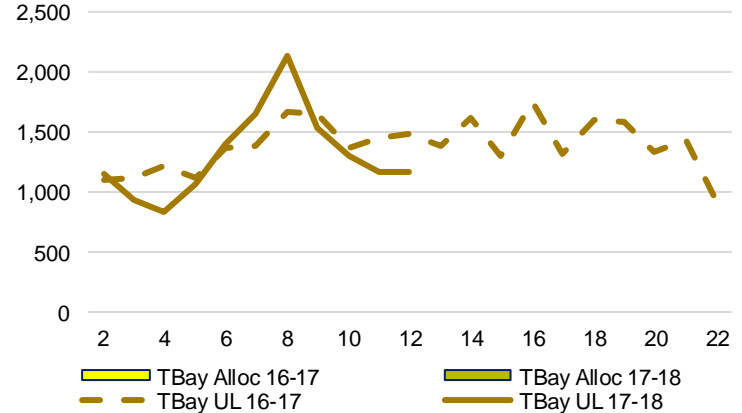
3-B3: Canadian National Planned Car Allocation to Western Ports Vs. Corridor Unloads at Port (# of Cars) – Prince Rupert



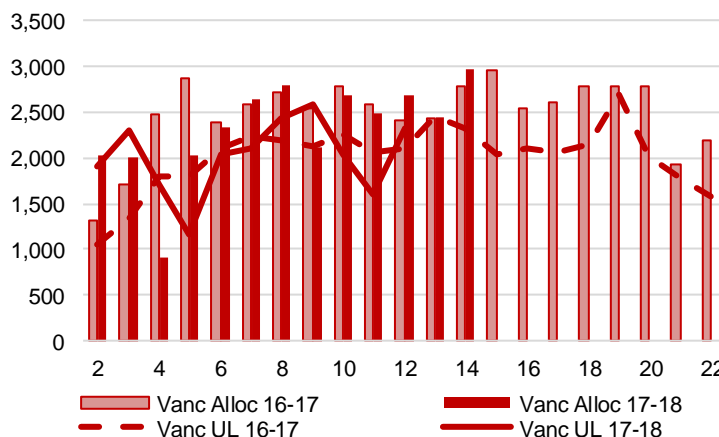
3-B1: Canadian National Planned Car Allocation to Western Ports Vs. Corridor Unloads at Port (# of Cars) – Thunder Bay



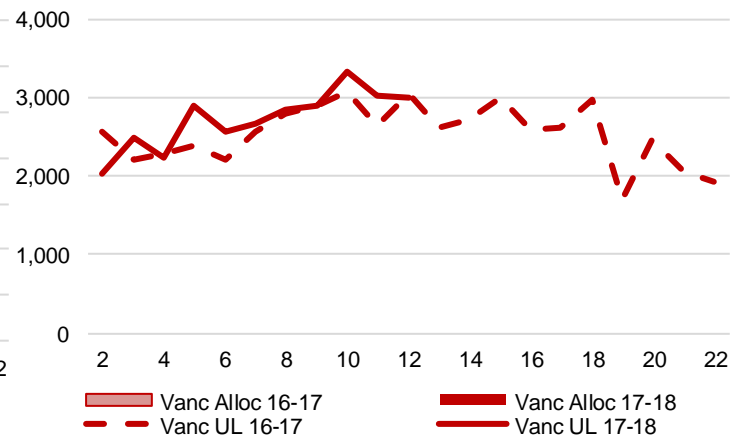
3-C1: Canadian Pacific Planned Car Allocation to Western Ports vs. Corridor Unloads at Port (# of Cars) – Thunder Bay



3-B2: Canadian National Planned Car Allocation to Western Ports Vs. Corridor Unloads at Port (# of Cars) – Vancouver



3-C2: Canadian Pacific Planned Car Allocation to Western Ports vs. Corridor Unloads at Port (# of Cars) – Vancouver



4. Port Performance

4-A Weekly Unloads by Port (Cars) – This Year for Week 12, 4-Week Rolling Average and Variances

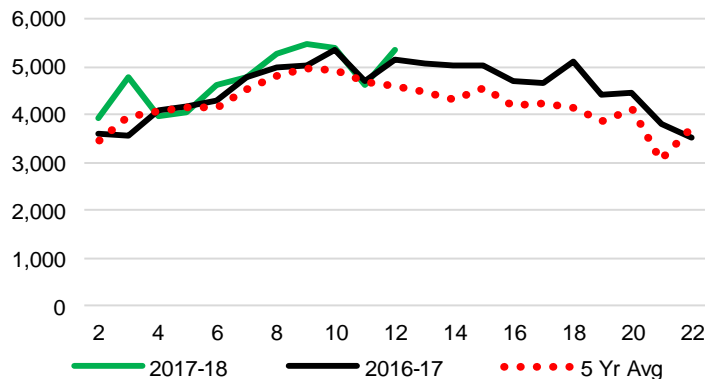
	Vancouver	Prince Rupert	West Coast	Thunder Bay	Churchill	Total
2017-18	5,342	1,176	6,518	2,120	-	8,638
2016-17	5,163	1,478	6,641	2,356	-	8,997
4 Wk Avg	5,213	1,288	6,500	2,260	-	8,760
Var % to Last Year	3%	-20%	-2%	-10%	n/a	-4%
Var % to 4 Wk Avg	2%	-9%	0%	-6%	n/a	-1%

4-B Railcar Unloads and Tonnes – This Year to Date as of Week 12 and Variances

	Vancouver	Prince Rupert	West Coast	Thunder Bay	Churchill	Total
Total Cars						
2017-18	55,605	12,087	67,692	23,404	-	91,096
2016-17	53,087	13,257	66,344	25,104	-	91,448
5 Yr Avg	52,036	13,934	65,969	24,157	4,212	94,338
Var % to Last Year	5%	-9%	2%	-7%	n/a	0%
Var % to 5 Yr Avg	7%	-13%	3%	-3%	-100%	-3%
Total Tonnes						
2017-18	5,004,438	1,086,717	6,091,155	2,148,498	-	8,239,653
2016-17	4,793,571	1,194,777	5,988,349	2,312,261	-	8,300,609
5 Yr Avg	4,643,130	1,250,374	5,893,504	2,217,661	274,469	8,385,635
Var % to Last Year	4%	-9%	2%	-7%	n/a	-1%
Var % to 5 Yr Avg	8%	-13%	3%	-3%	-100%	-2%

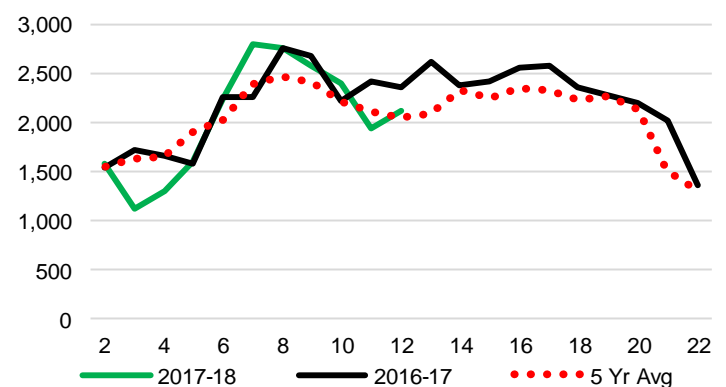
4-C Vancouver Unloads (# of Cars)

(This Year vs. Last Year and the 5-Year Average)



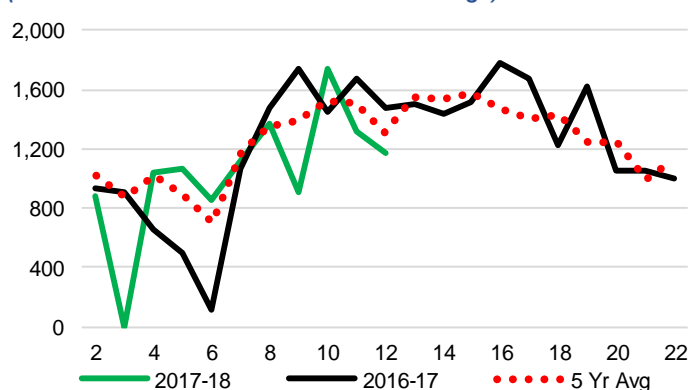
4-E Thunder Bay Unloads (# of Cars)

(This Year vs. Last Year and the 5-Year Average)

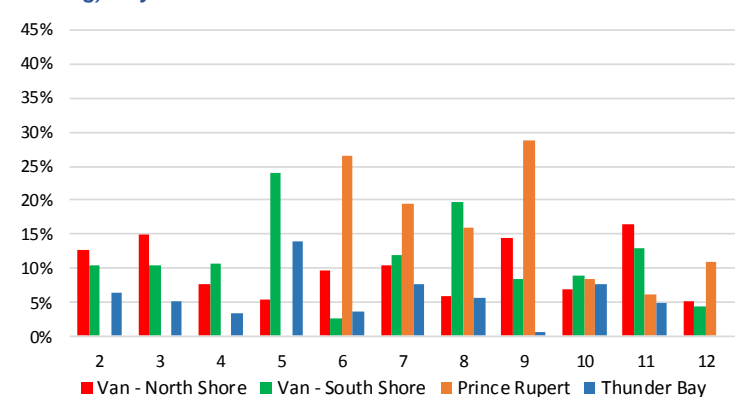


4-D Prince Rupert Unloads (# of Cars)

(This Year vs. Last Year and the 5-Year Average)



4-F Weekly Out of Car Time – (% of hours out of cars/total hours working) – by Port to Week 12



Out of car time is measured weekly and uses data from terminal elevators on the total number of hours the facilities are open & staffed (including overtime hours) and the corresponding number of hours that terminals have no rail cars available to unload. The measure is expressed as a percentage (hours without cars to the total number of hours working).

4-G Monthly Unloads (Cars) – This year vs. Last Year and the 5-Year Average to Week 9

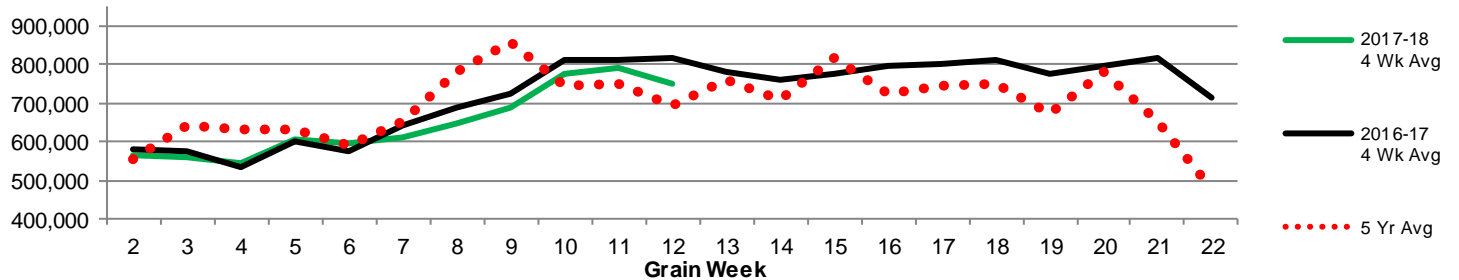
Months	Aug	Sep	Oct	Nov	Dec	Jan	Feb	Mar	Apr	May	Jun	Jul
Weeks	1-5	6-9	10-13	14-18	19-22	23-27	28-31	32-35	36-39	40-44	45-48	49-52
2017-18	30,257	34,784	-	-	-	-	-	-	-	-	-	-
2016-17	31,197	33,447	36,002	44,476	28,797	28,771	26,824	37,057	36,789	39,112	29,666	27,065
5 Yr Avg	34,389	33,768	33,880	40,806	26,709	23,919	22,985	32,448	31,653	36,037	26,863	25,033
Var % to Last Year	-3%	4%										
Var % to 5 Yr Avg	-12%	3%										

5. Shipments

5-A Shipments from Port Terminals (Tonnes) – This Year as of Week 12 and Variance to Last Year

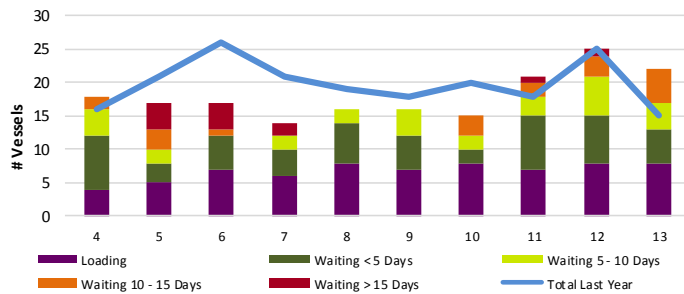
	<u>Vancouver</u>	<u>Prince Rupert</u>	<u>West Coast</u>	<u>Thunder Bay</u>	<u>Churchill</u>	<u>Total</u>
2017-18	4,811,413	1,055,174	5,866,587	1,909,491	-	7,776,078
2016-17	4,701,184	1,129,035	5,830,219	2,323,100	-	8,153,319
5 Year Avg	4,633,748	1,158,191	5,791,939	2,123,538	209,995	8,125,472
Var % to Last Year	2%	-7%	1%	-18%	n/a	-5%
Var % to 5 Year Avg	4%	-9%	1%	-10%	-100%	-4%

5-B Weekly Shipments (Tonnes) from Port Terminals - This year 4-Wk moving avg vs. last year 4-Wk moving avg and the 5-year avg

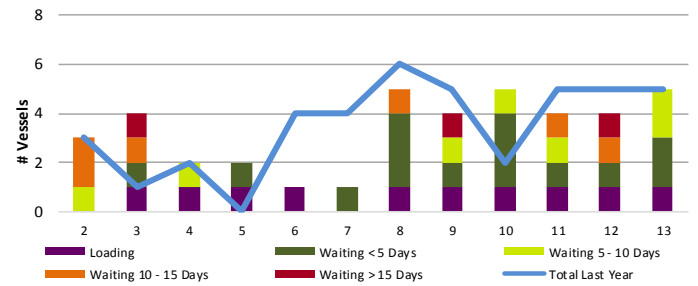


6. Vessels

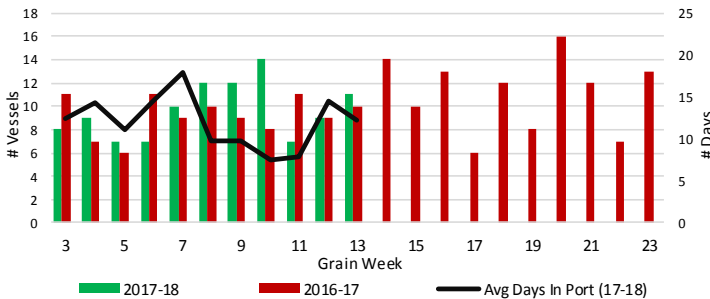
6-A Vessel lineup at Vancouver as of Week 13 2017-18



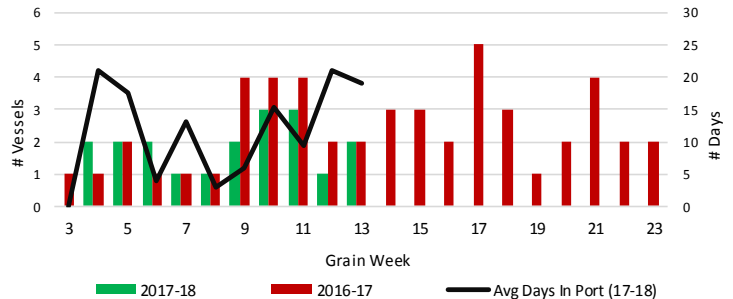
6-C Vessel lineup at Prince Rupert as of Week 13 2017-18



6-B Vessels Cleared at Vancouver up to Week 13 2017-18



6-D Vessels Cleared at Prince Rupert up to Week 13 2017-18



Note: To determine Avg Days in Port, Quorum first establishes which vessels cleared port in each specific grain week. Then, the number of days each cleared vessel spent in port is calculated by subtracting the date of arrival from the date of departure. Lastly, an average of these days is produced for the week, which yields Avg Days in Port. The measure uses vessel data provided by the BC Chamber of Shipping.