

Grain Monitoring Program

Weekly Performance Update

October 3, 2017

For Grain Week 8 (2017-18 CY)

Summary

	This Week	Last Week	Var. from Last Year
1. Stocks in Store (Tonnes 000)			
Country Elevators	↓ 3,832.2	3,941.3	16%
% Working Capacity	81%	83%	
Terminal Elevators	↑ 1,364.2	1,288.5	44%
% of Working Capacity	78%	74%	

2. Country Deliveries (Tonnes 000)			
Country Deliveries	↓ 929.7	1,169.1	-29%

3. Railway Car Supply to Western Ports (Cars)			
CN Allocation Plan	↑ 5,875	5,871	-6%
CN Unloads	↑ 4,402	4,378	-7%
CP Allocation Plan	n/a	n/a	n/a
CP Unloads	↑ 4,964	4,318	11%

4. Port Performance			
Total Weekly Unloads	↑ 9,366	8,696	2%
4 Week Rolling Average	↑ 8,106	7,336	n/a
Var. to 4 Week RA	↓ 16%	19%	n/a
YTD Unloads	↑ 55,942	46,576	1%
Weekly Out of Car Time	↑ 17.1%	11.3%	-19%

5. Shipments (YTD Tonnes 000)			
Vancouver	↑ 2,990	2,612	1%
Prince Rupert	↑ 493	417	-5%
Thunder Bay	↑ 1,131	887	-20%
Total Western Canada	↑ 4,614	3,915	-5%

6. Vessels as of					
Vancouver	Vessel Line Up	—	16	16	-11%
	Vessels Cleared	—	12	12	33%
	Vessels Incoming	↑	16	12	n/a
Pr. Rupert	Vessel Line Up	↓	4	5	-20%
	Vessels Cleared	↑	2	1	-50%
	Vessels Incoming	↑	4	1	n/a

1. Stocks in Store: (Page 2)

- Country stocks decreased to 3.8 MMT in Week 8 utilizing 81% of the system's working capacity. Space in country elevators is fair.
- Total western port terminal stocks increased to 1.4 MMT in Week 8, utilizing 78% of the working capacity.

2. Country Deliveries (Page 2)

- Producer deliveries decreased to 929,700 tonnes.

3. Railway Car Supply: (Page 3)

- Railcar allocation plans are supplied by CN to Week 10 of the 2017-18 grain year (see page 3 for details).

4. Port Performance: (Page 4)

- Total western port unloads are 16% higher than the 4-week rolling average and 2% higher than Week 8 last year.
- West Coast unloads were 6,613 cars (Vancouver 5,242 and Prince Rupert 1,371), 15% higher than the 4-week rolling average and 2% higher than Week 8 last year.
- Thunder Bay terminals unloaded 2,753 cars, 17% higher than the 4-week rolling average and approximately equal to Week 8 last year.
- Year to date total western port unloads are 1% higher than the same period last year. The corresponding tonnage is 2% higher.
- The total average terminal out of car time (OCT) increased to 17.1% from 11.3% in the previous week. The OCT time for Week 8 was 17% in Vancouver, 16% in Prince Rupert and 18% in Thunder Bay.

5. Shipments: (Page 5)

- Year to date Western Canadian shipments from port terminal elevators at Week 8 are 5% lower than the same period last year and 9% lower than the 5-year average.

6. Vessels: (Page 5)

- Week 9 lineup at Vancouver remained at a total of 16 vessels (The current one-year average at Vancouver is 22 vessels). Of the 16, 7 were at berth, 7 were anchored at English Bay, 1 was anchored along the southern shore of Vancouver Island, and 1 was anchored at Burrard Inlet.
- Prince Rupert vessel count decreased to a total of 4 vessels (The current one-year average at Prince Rupert is 4 vessels).
- Vessels cleared from Vancouver were 12, and from Prince Rupert were 2 in Week 9 of the 2017-18 crop year.

Note: Vessels incoming for the current week represents vessels forecasted to arrive in next grain week. Vessels incoming for the previous week represents the number of vessels that arrived in the current reporting week.

1. Stocks in Store

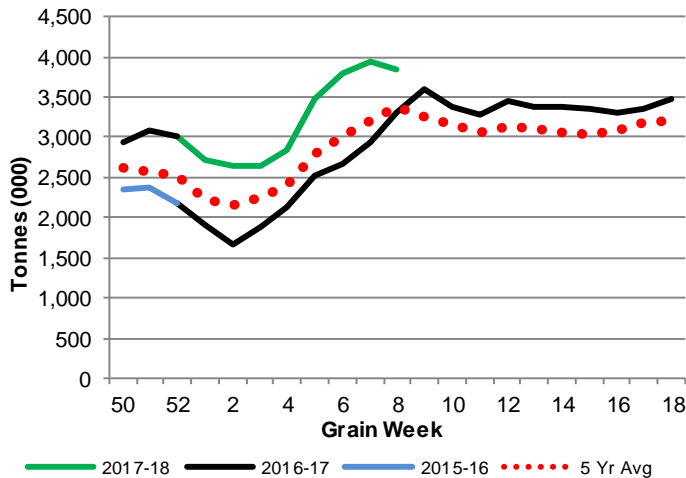
1-A1 Country Stocks ('000 tonnes) – Week 8

	MB	SK	AB	BC	Total
2017-18	795.8	1,969.8	1,041.9	24.7	3,832.2
2016-17	702.9	1,656.3	915.0	28.2	3,302.4
5 Yr Avg	732.4	1,669.2	944.0	28.6	3,374.3
Var % - LY	13%	19%	14%	-12%	16%
Var % - 5 Yr Avg	9%	18%	10%	-14%	14%
Storage Capacity	1,594.5	3,751.1	1,904.5	41.1	7,291.3
Estimated Working Capacity	1,036.4	2,438.2	1,237.9	26.7	4,739.3
17-18 % of Wkg Cap	77%	81%	84%	92%	81%

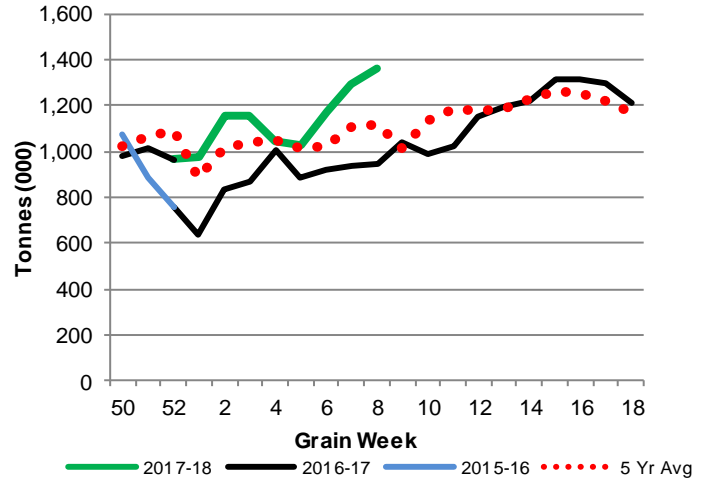
1-B1 Terminal Stocks ('000 tonnes) – Week 8

	West Coast	Churchill	Thunder Bay	Total
2017-18	782.8	29.5	551.9	1,364.2
2016-17	534.6	29.5	383.1	947.2
5 Yr Avg	571.0	71.3	470.1	1,112.4
Var % - LY	46%	0%	44%	44%
Var % - 5 Yr Avg	37%	-59%	17%	23%
Storage Capacity	1,187.5	140.0	1,157.5	2,485.0
Estimated Working Capacity	831.2	98.0	810.3	1,739.5
17-18 % of Wkg Cap	94%	30%	68%	78%

1-A2 Weekly Country Stocks in Store



1-B2 Weekly Terminal Stocks in Store

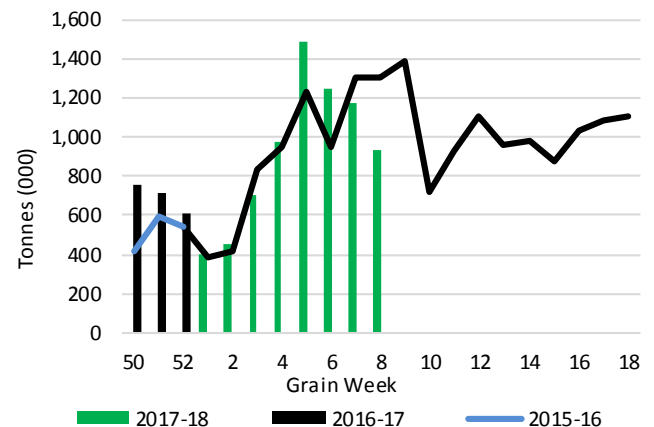


2. Country Deliveries

2-A Weekly Country Deliveries ('000 tonnes) - Week 8

	MB	SK	AB	BC	Total
2017-18	204.9	465.3	251.0	8.5	929.7
2016-17	329.6	574.3	389.1	12.2	1,305.1
4 Wk Avg	296.5	605.7	300.8	5.0	1,208.0
Var % to Last Year	-38%	-19%	-35%	-30%	-29%
Var % To 4 Wk Avg	-31%	-23%	-17%	70%	-23%

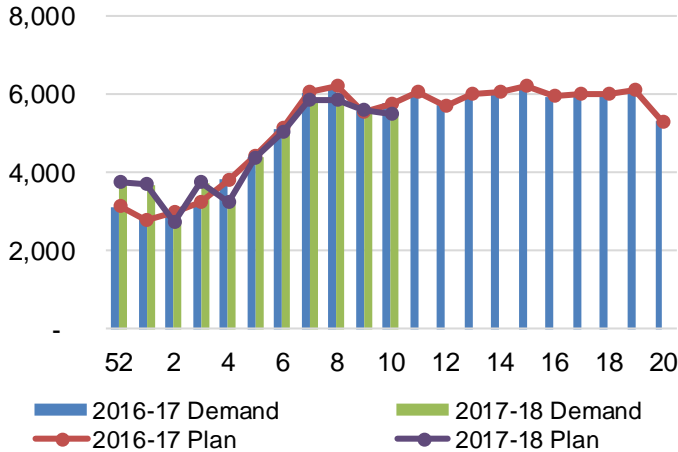
2-B 2017-18 Weekly Country Deliveries vs 2016-17



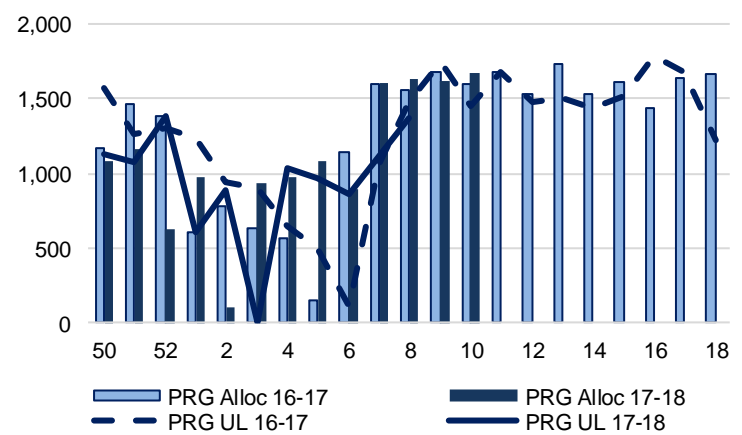
3. Railway Car Supply

Special Note to readers: CP discontinued publishing weekly railcar spotting plans in week 12 of the 2014-15 crop year (GCRS Service Report). CN continues to publish a weekly plan and the graphs below reflect CN's plan to Week 10 of 2017-18. Note that the orders accepted do not necessarily reflect shipper demand, but rather the railways' acceptance of shippers' car orders. When both railways provide the order fulfillment data requested with the expansion of the GMP mandate, which was announced on February 3, 2014, a complete set of metrics will be presented.

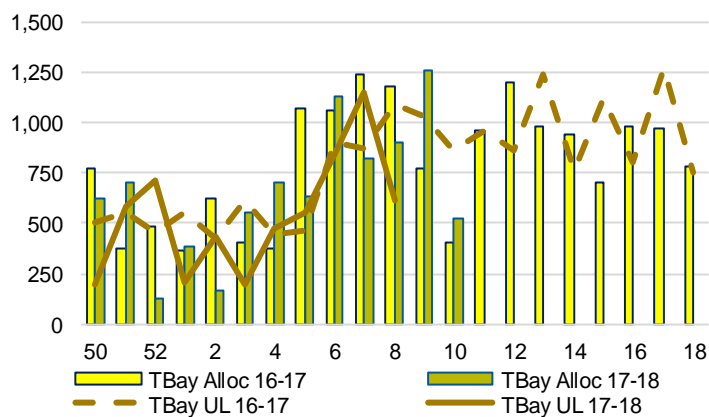
3-A: Canadian National Planned Car Allocation vs. Demand (# of Cars) To Week 10 2017-18 Crop Year



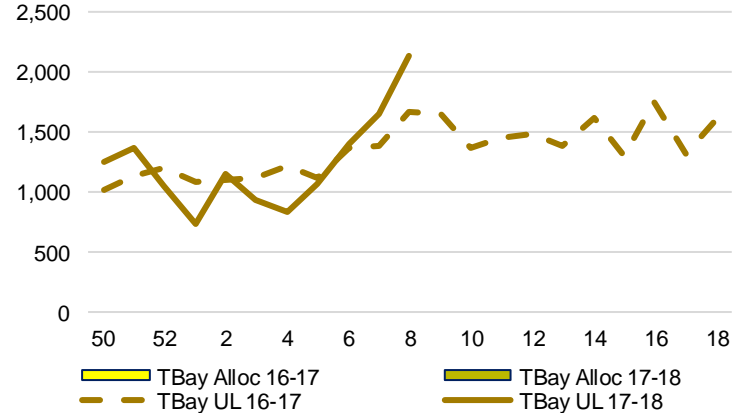
3-B3: Canadian National Planned Car Allocation to Western Ports Vs. Corridor Unloads at Port (# of Cars) – Prince Rupert



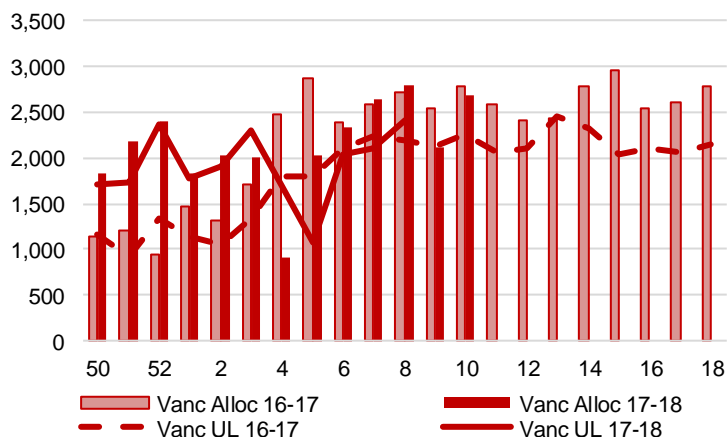
3-B1: Canadian National Planned Car Allocation to Western Ports Vs. Corridor Unloads at Port (# of Cars) – Thunder Bay



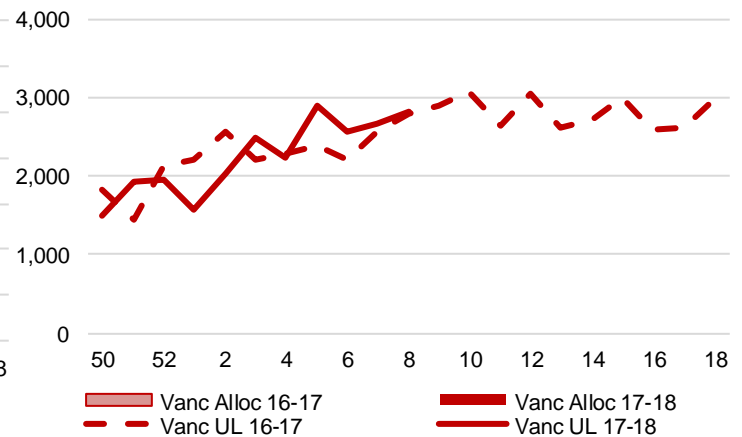
3-C1: Canadian Pacific Planned Car Allocation to Western Ports vs. Corridor Unloads at Port (# of Cars) – Thunder Bay



3-B2: Canadian National Planned Car Allocation to Western Ports Vs. Corridor Unloads at Port (# of Cars) – Vancouver



3-C2: Canadian Pacific Planned Car Allocation to Western Ports vs. Corridor Unloads at Port (# of Cars) – Vancouver



4. Port Performance

4-A Weekly Unloads by Port (Cars) – This Year for Week 8, 4-Week Rolling Average and Variances

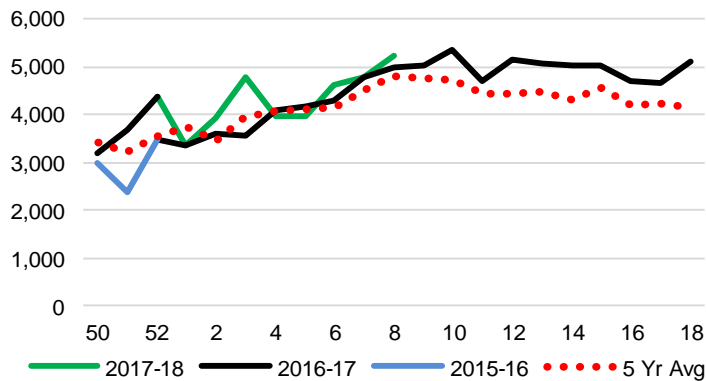
	Vancouver	Prince Rupert	West Coast	Thunder Bay	Churchill	Total
2017-18	5,242	1,371	6,613	2,753	-	9,366
2016-17	4,985	1,472	6,457	2,765	-	9,222
4 Wk Avg	4,652	1,103	5,755	2,351	-	8,106
Var % to Last Year	5%	-7%	2%	0%	n/a	2%
Var % to 4 Wk Avg	13%	24%	15%	17%	n/a	16%

4-B Railcar Unloads and Tonnes – This Year to Date as of Week 8 and Variances

	Vancouver	Prince Rupert	West Coast	Thunder Bay	Churchill	Total
Total Cars						
2017-18	34,641	6,937	41,578	14,364	-	55,942
2016-17	32,880	6,902	39,782	15,425	-	55,207
5 Yr Avg	32,833	8,196	41,029	15,377	2,665	59,071
Var % to Last Year	5%	1%	5%	-7%	n/a	1%
Var % to 5 Yr Avg	6%	-15%	1%	-7%	-100%	-5%
Total Tonnes						
2017-18	3,137,721	636,360	3,774,081	1,330,524	-	5,104,605
2016-17	2,972,376	616,264	3,588,639	1,430,899	-	5,019,538
5 Yr Avg	2,943,629	736,331	3,679,960	1,418,727	172,518	5,271,205
Var % to Last Year	6%	3%	5%	-7%	n/a	2%
Var % to 5 Yr Avg	7%	-14%	3%	-6%	-100%	-3%

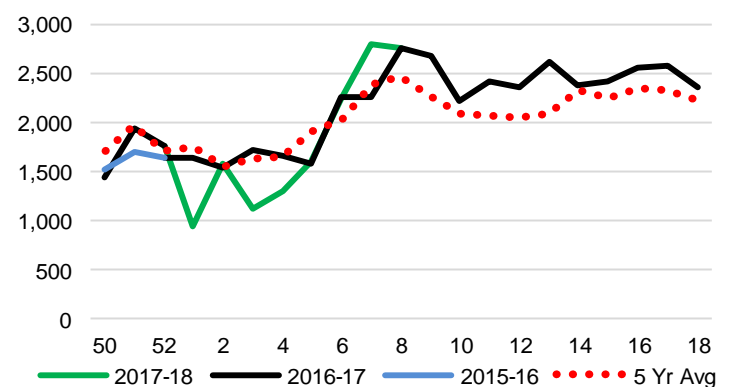
4-C Vancouver Unloads (# of Cars)

(This Year vs. Last Year and the 5-Year Average)



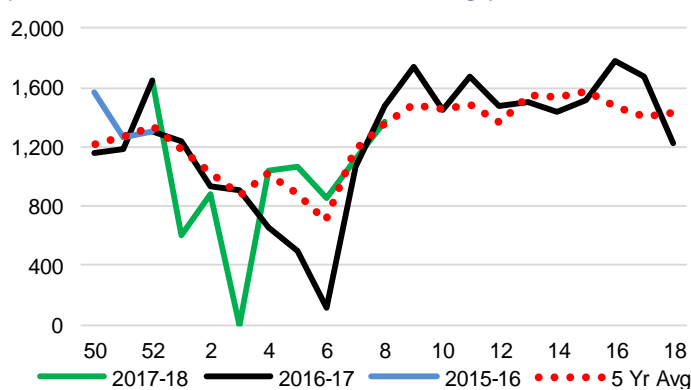
4-E Thunder Bay Unloads (# of Cars)

(This Year vs. Last Year and the 5-Year Average)

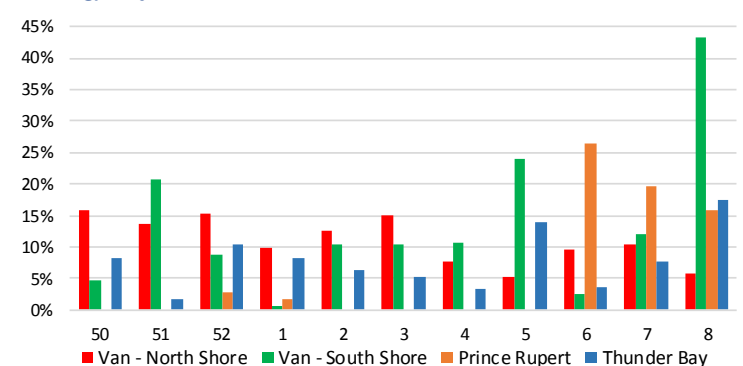


4-D Prince Rupert Unloads (# of Cars)

(This Year vs. Last Year and the 5-Year Average)



4-F Weekly Out of Car Time – (% of hours out of cars/total hours working) – by Port to Week 8



Out of car time is measured weekly and uses data from terminal elevators on the total number of hours the facilities are open & staffed (including overtime hours) and the corresponding number of hours that terminals have no rail cars available to unload. The measure is expressed as a percentage (hours without cars to the total number of hours working).

4-G Monthly Unloads (Cars) – This year vs. Last Year and the 5-Year Average to Week 5

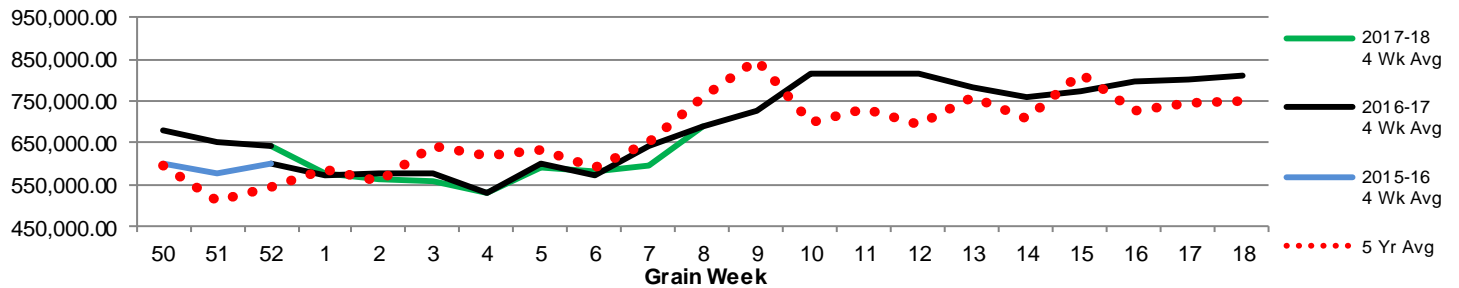
Months	Aug	Sep	Oct	Nov	Dec	Jan	Feb	Mar	Apr	May	Jun	Jul
Weeks	1-5	6-9	10-13	14-18	19-22	23-27	28-31	32-35	36-39	40-44	45-48	49-52
2017-18	30,175	-	-	-	-	-	-	-	-	-	-	-
2016-17	31,197	33,447	36,002	44,476	28,797	28,771	26,824	37,057	36,789	39,112	29,666	27,065
5 Yr Avg	34,372	32,466	33,880	40,806	26,709	23,919	22,985	32,448	31,653	36,037	26,863	25,033
Var % to Last Year	-3%	n/a										
Var % to 5 Yr Avg	-12%	n/a										

5. Shipments

5-A Shipments from Port Terminals (Tonnes) – This Year as of Week 8 and Variance to Last Year

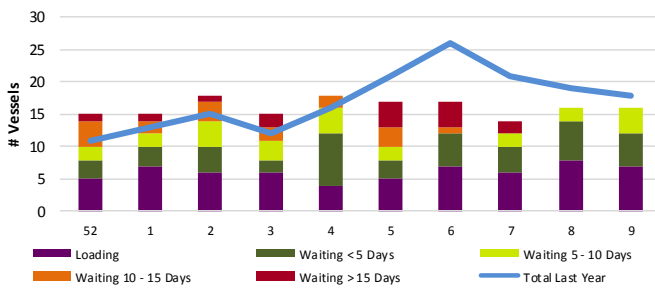
	Vancouver	Prince Rupert	West Coast	Thunder Bay	Churchill	Total
2017-18	2,990,276	492,520	3,482,796	1,131,329	-	4,614,125
2016-17	2,948,449	516,712	3,465,161	1,416,996	-	4,882,157
5 Year Avg	2,934,142	604,495	3,538,637	1,383,147	124,351	5,046,135
Var % to Last Year	1%	-5%	1%	-20%	n/a	-5%
Var % to 5 Year Avg	2%	-19%	-2%	-18%	-100%	-9%

5-B Weekly Shipments (Tonnes) from Port Terminals - This year 4-Wk moving avg vs. last year 4-Wk moving avg and the 5-year avg

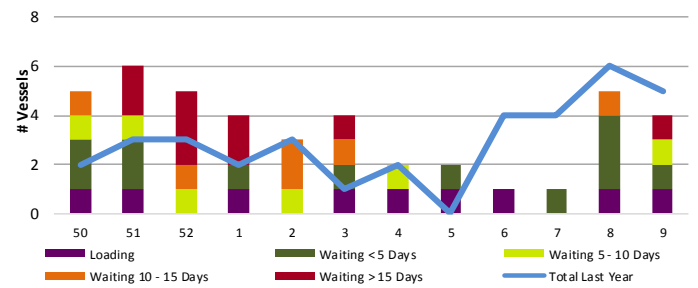


6. Vessels

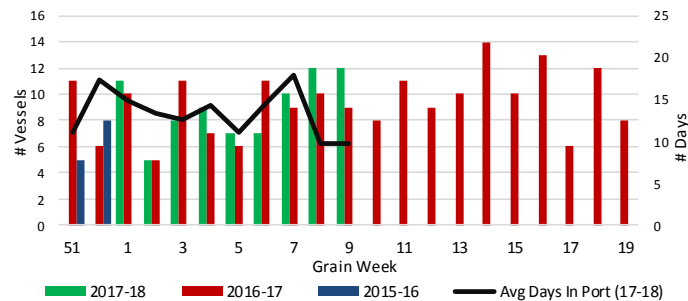
6-A Vessel lineup at Vancouver as of Week 9 2017-18



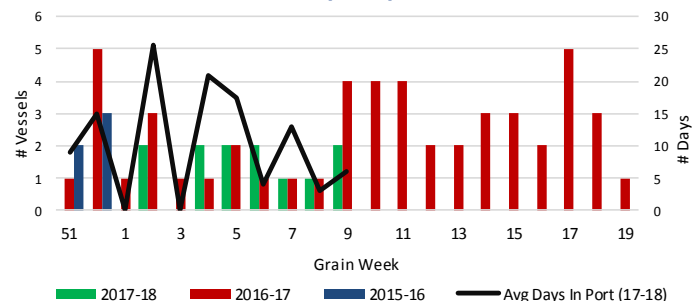
6-C Vessel lineup at Prince Rupert as of Week 9 2017-18



6-B Vessels Cleared at Vancouver up to Week 9 2017-18



6-D Vessels Cleared at Prince Rupert up to Week 9 2017-18



Note: To determine Avg Days in Port, Quorum first establishes which vessels cleared port in each specific grain week. Then, the number of days each cleared vessel spent in port is calculated by subtracting the date of arrival from the date of departure. Lastly, an average of these days is produced for the week, which yields Avg Days in Port. The measure uses vessel data provided by the BC Chamber of Shipping.